



EARLY HEAD START ANNUAL REPORT

2022 - 2023



FOOTHILL FAMILY'S EARLY HEAD START PROGRAM MISSION

to provide high quality, strength-based, comprehensive child development services that empower caregivers to enrich the lives of children, families and communities.

3

PROGRAM OPTIONS

Home-based, Center-based, and
Family Child Care

11

CITIES SERVED

Alhambra
Azusa
Baldwin Park
Covina
Duarte
El Monte
La Puente
Pomona
Rosemead
South El Monte
West Covina



COMPREHENSIVE SERVICES FOR LOW-INCOME PREGNANT WOMEN AND FAMILIES WITH CHILDREN FROM 0 TO 3 YEARS

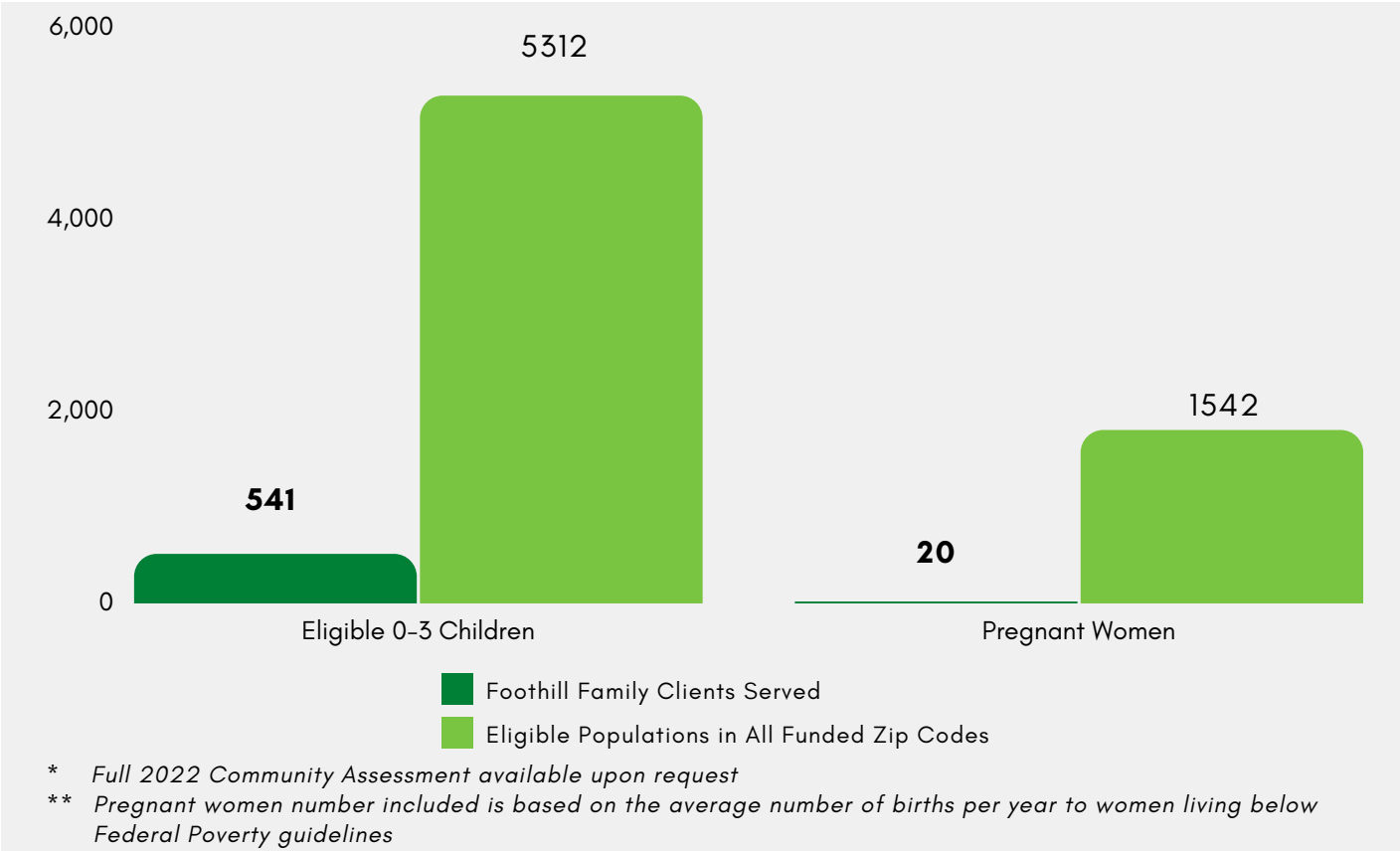
Education and Child Development
Health Services
Nutrition Services
Mental Health/Disabilities
Family Engagement
Social Support

Family Child Care and Center-based programs are operated in partnership with local licensed child care providers to provide full day, full year services. Infants and toddlers can receive services up to 36 months in licensed Center-based programs and 48 months in licensed Family Child Care homes.

Foothill Family's Early Head Start (EHS) program utilizes a strength-based, relationship-focused approach toward school readiness through engaging families as full partners in their child's learning and development. Childcare partners are trained in the research-based Creative Curriculum; Home Visitors are certified in the evidence-based Parents as Teachers foundation curriculum. Both are aligned with the Head Start Early Learning Outcomes Framework (ELOF) and the California Infant Toddler Learning and Development Foundations. The Foothill Family EHS program supplements each curriculum with research-based tools and approaches that have proven most effective with EHS children and families.

This Annual Report captures vital program performance indicators during 12 months to capture fiscal year-end data for the Home-based and Early Head Start-Child Care Partnerships Program.

TOTAL NUMBER OF ELIGIBLE 0-3 CHILDREN AND
PREGNANT WOMEN SERVED IN FUNDED ZIP CODES



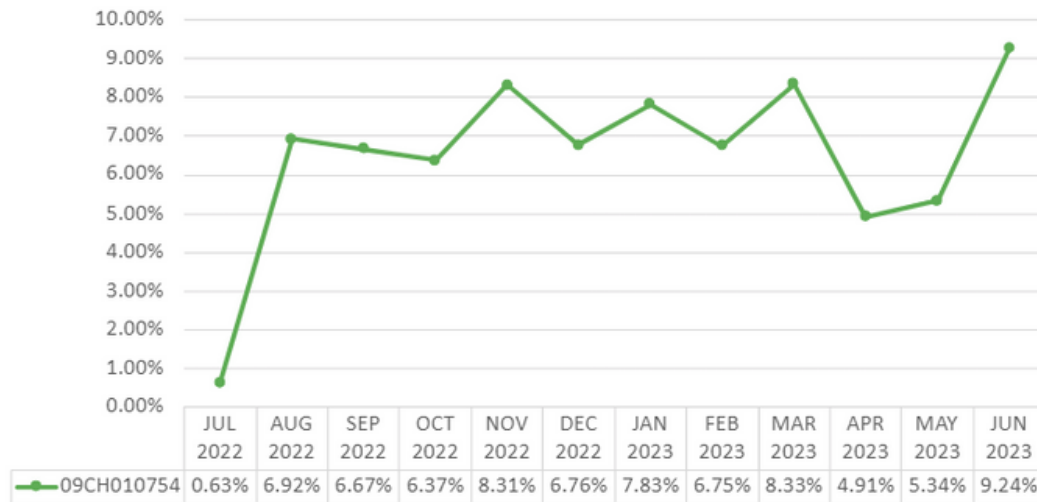
During the 2022 - 2023 program year, 10% of eligible children ages 0-3 were served, and 1.3% of eligible pregnant women were served, which speaks to the great need for Early Head Start services in our funded zip codes.

ENROLLMENT PROGRAM DATA, JULY 1ST 2022- JUNE 30TH 2023

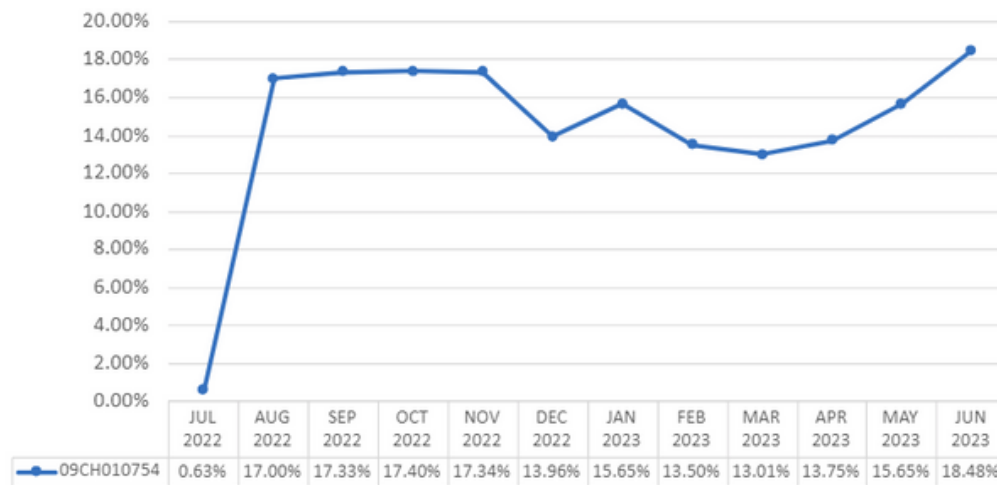
	09CH010754 HB & CCP
AVERAGE MONTHLY ENROLLMENT	73%
CUMULATIVE ENROLLMENT	541
NUMBER OF PREGNANT WOMEN	20
NUMBER OF FAMILIES SERVED	464

CHILD HEALTH

Up-to-Date on Physical Exams



Up-to-Date on Dental Exams

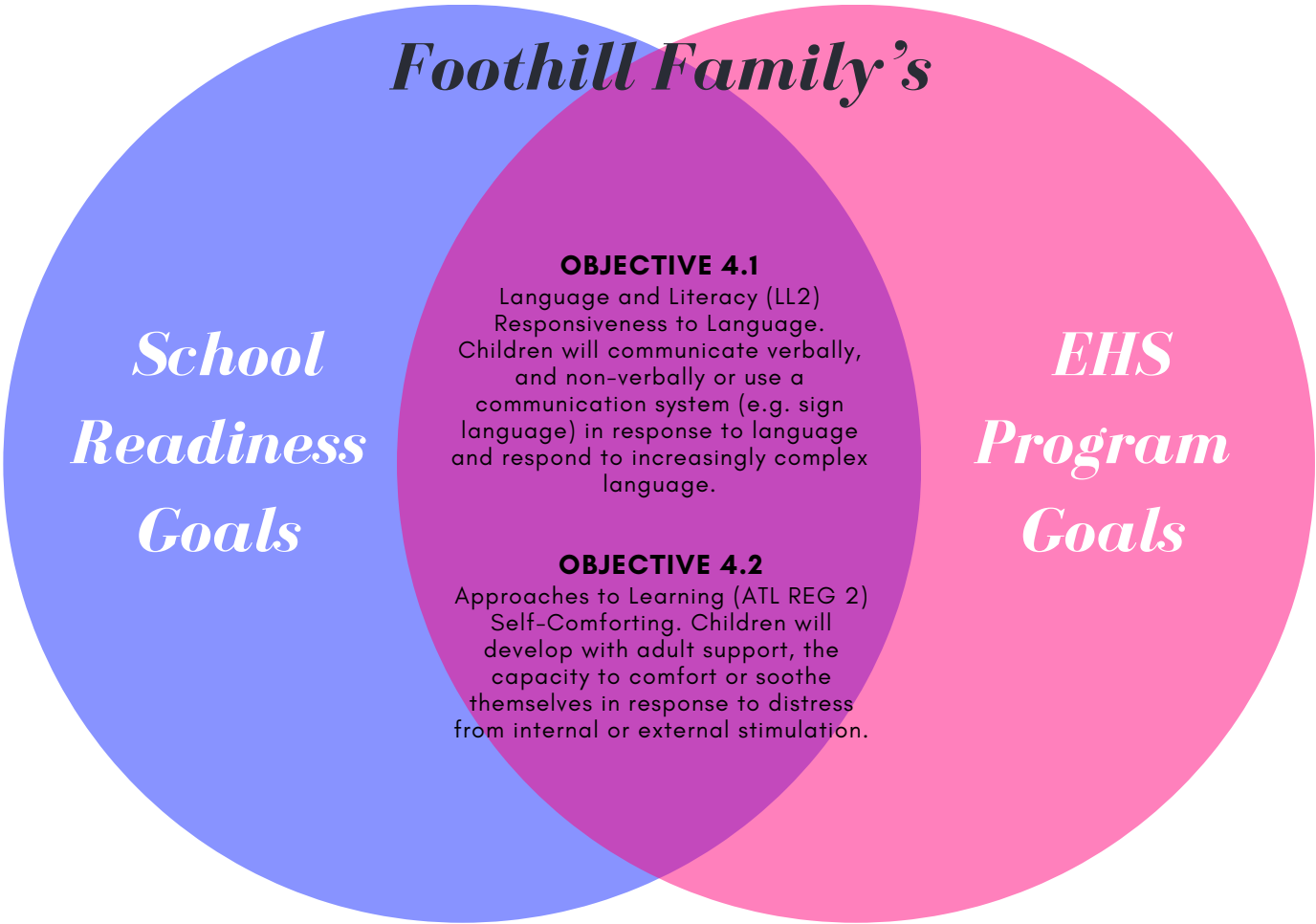


The Foothill Family EHS program continues to recognize the impact of the COVID-19 pandemic on families and access to services, which is a direct correlation to the completion rate of Well-Baby and Dental examinations. During the program year, families were challenged with following through with scheduled Well-Baby (Physical Exams) and Dental exams. Although medical and dental clinics returned to providing in-person services, families shared they found it challenging to complete routine doctor and dental visits. To respond to these challenges, Foothill Family EHS staff provided families with health education on the importance of keeping scheduled Well-Baby and dental examination appointments throughout the program year to ensure their children are healthy and remain up-to-date on medical and dental services. EHS Staff provided Health education to individual families during home or family service visits. As a result of staff commitment to delivering health-related education information to families, the percentage of children who were up-to-date on dental exams at the end of enrollment doubled compared to last year. Foothill Family EHS program also consulted with the Health Services Advisory Committee (HSAC) for support and strategies to address family challenges to ensure their children were up-to-date on Well-Baby and Dental examinations. The HSAC recommended that the program offer more in-person health education events. Additionally, Foothill Family EHS Staff will encourage Center-based Providers and Family childcare Providers to promote medical services amongst their families while helping to identify any barriers families may be experiencing in ensuring children are up-to-date on their medical services through training and professional development.

SCHOOL READINESS

The Improving Head Start for School Readiness Act of 2007 requires all Head Start and Early Head Start programs to develop school readiness goals. The Head Start Early Learning Outcomes Framework’s (ELOF) infant and toddler guidelines align perfectly with the program’s existing school readiness goals, assessment tools, and early education approach. There are five early learning domains: Language and Literacy; Cognition, Approaches to Learning; Physical Health and Motor Development; and Social and Emotional Development.

Foothill Family’s Early Head Start (EHS) School Readiness Goals are combined with Foothill Family’s EHS Program Goals were two:

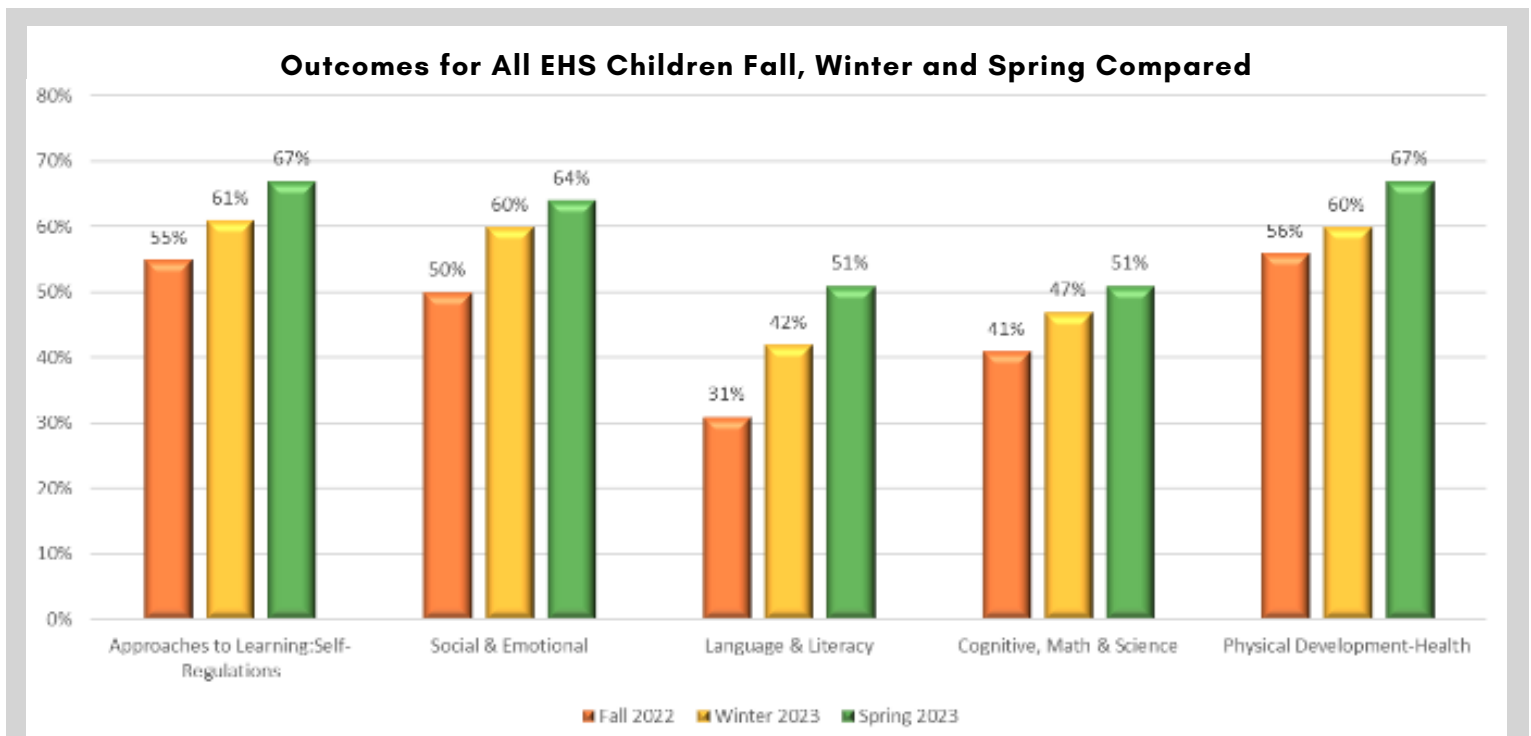


**OFFICE OF HEAD START’S
DEFINITION OF SCHOOL READINESS**
"..children are ready for school, families are ready to support their children’s learning, and schools are ready for children."

**DESIRED RESULTS DEVELOPMENTAL PROFILE (DRDP) OUTCOMES
FOR ALL PROGRAM OPTIONS COMBINED:
*FAMILY CHILD CARE, CENTER-BASED, & HOME-BASED PROGRAM***

During the 2022 - 2023 program year, 49% (136/278) of enrolled children participated in all three Assessment periods (Fall, Winter, and Spring). 30 Center-based, 27 Home-based, and 79 FCC children participated in Assessments #1-#3. In addition, 93% of children are Dual Language Learners, and 7% have an Individualized Family Service Plan (IFSP), meaning they have a developmental delay and receive services from the Regional Center.

The 136 children who were assessed across all three Assessment Periods (Fall, Winter, Spring) showed consistent growth across all three assessment periods across all domains. The gains ranged from 10% to 20% growth among the domains. The greatest percentage of growth was in the Language and Literacy domain. It went from 31% in the fall to 51% in the spring.



* Full 2023 School Readiness report available upon request

STAFF TRAINING AND PROFESSIONAL DEVELOPMENT

Staff training and professional development remain a top priority for the Foothill Family EHS program. During the 2022-2023 program year, Foothill Family launched new 3-5-year program goals. One of the three goals focuses on enhancing professional development practices and creating new opportunities for EHS staff and Partners to grow and succeed. EHS continues to partner with other Foothill Family programs to help support staff and partners in ensuring child safety while identifying and addressing other possible risk factors impacting the lives of our clients.

Our annual Pre-Service in June 2023 returned to a majority in-person format. The Pre-Service is designated time to assist staff in acquiring or increasing the knowledge and skills needed to provide high-quality, comprehensive services within the scope of their job responsibilities. The theme for the four-day Pre-Service was *"Catching Fire and Igniting Team Spirit."* Activities during the four days included personal goal setting for EHS Staff, highlighting the agency mission, vision, and EHS program goals for the next 3-5 years, remembering the purpose for the work, developing a team identity, staff wellness, and engaging in team building activities both virtually and in-person.



In alignment with the Head Start Program Performance Standards (HSPPS), Foothill Family EHS continues to utilize a research-based coordinated coaching program using the Practice-Based Coaching (PBC) Model. During the 2022-2023 program year, it was identified that the intensive one-on-one individual coaching model continues to be a critical component in strengthening our Home Visitor (HV) and Childcare Partners' professional development. Our approach is grounded on collaborative coaching partnerships and data from various sources, including child outcomes, the Home Visiting Rating Scales (HOVRS) observation results, and the Pyramid Infant-Toddler Observation Scale (TPITOS). The data allows us to measure individual staff and Partner needs, set goals, and offer training and support to help a coaching participant achieve desired outcomes for improving effective teaching practices.

199

**professional development
trainings**

for program staff and partners

1883

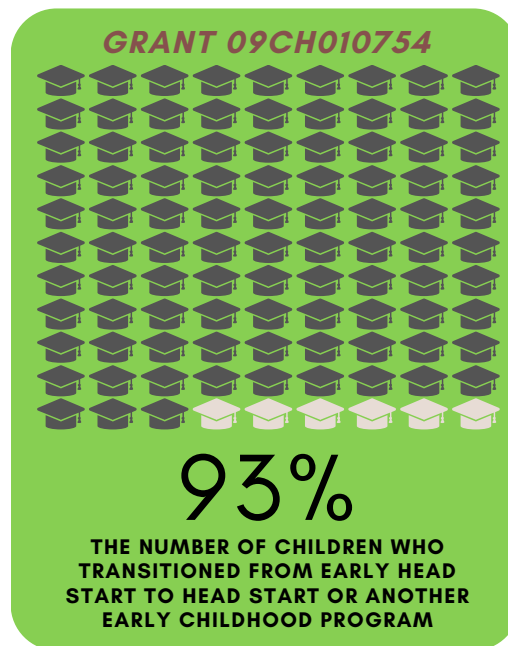
training hours

which well exceeded the 15-hour
Head Start requirement.

TRANSITIONING CHILDREN TO HEAD START & SERVICES FOR CHILDREN WITH DISABILITIES

The Foothill Family EHS program has continued to build and expand upon successful partnerships with other local Head Start programs and Part C programs in the cities we serve to transition children from Early Head Start to Head Start successfully. The following table details the number of children who successfully transitioned to a Head Start program by grant:

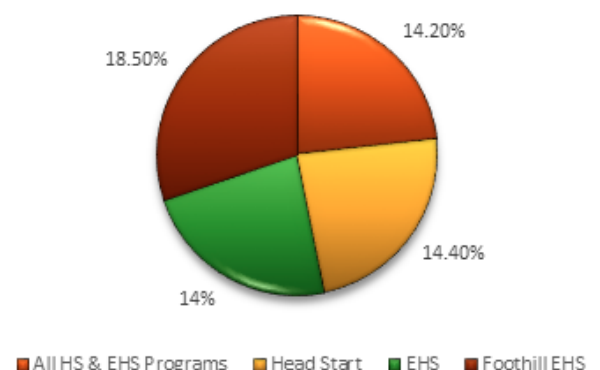
Of Those Who Aged Out, The Number of Children Who Transitioned From Early Head Start to Head Start or Another Early Childhood Program



** Information taken from 2022-2023 PIR data. HB- Home-Based; CCP - Child Care Partnerships*

Recognizing the high number of children with disabilities served and their needs, EHS continued to work closely with the San Gabriel Pomona Regional Center (SGPRC) and the East Los Angeles Regional Center (ELARC) to coordinate care for EHS families. The program collaborated with both Regional Centers to promote opportunities for families to learn more about all the possible service for children needing assessments and/or receiving services for their individualized Family Service Plans (IFSP) during community recruitment events. The Early Head Start staff regularly attended collaboration meetings at SGPRC. Last year, the program served 88 children versus 52 children in 2021-2022, this was a 7.4% increase in children receiving IFSP services. We were able to serve 18.5% of our funded enrollment, this was higher than the national percentage averages across both Head Start and Early Head Start.

2022-2023 National Percentage of Children with Disabilities Served versus Foothill's EHS Served Percentage's

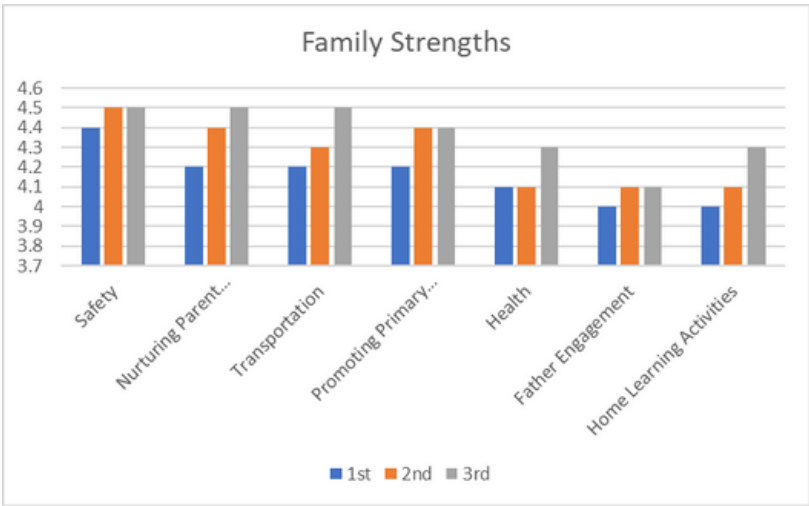


** State and national percentages are taken from the 2022 - 2023 Grant State National PIR Indicator*

PARENT, FAMILY & COMMUNITY ENGAGEMENT
2022 -2023 ACCOMPLISHMENTS

Early Head Start invests a significant amount of its funding and resources to work and support parents of all enrolled children. Head Start was developed to close the achievement gap for vulnerable children. Since its inception, Head Start has recognized that the advancement of vulnerable children could not happen without the advancement of their parents. Fifty-eight years after its inception, Early Head Start and Head Start continue supporting the advancement of parents to break generational poverty.

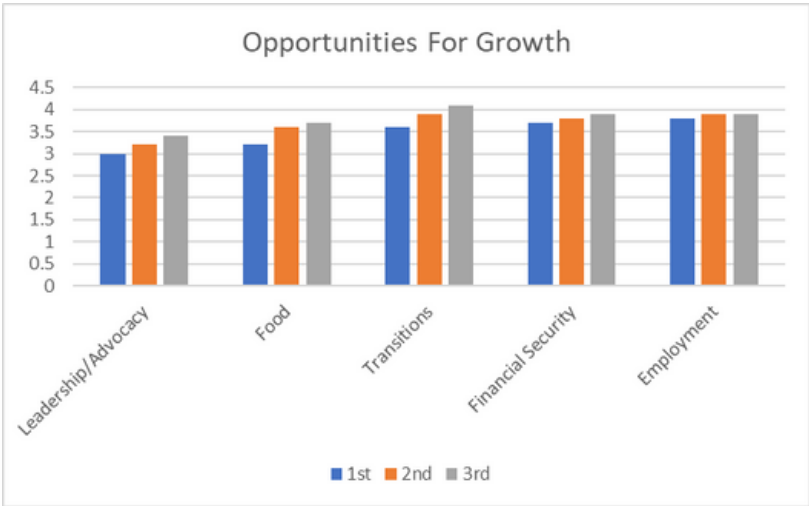
Here at Foothill Family Early Head Start, families are paired with Home Visitors or Family Service Specialists who work alongside families to build trusting, goal-oriented relationships. Home visitors visit families enrolled in the Home-based program once per week. Family Service Specialists complete a monthly family service visit with families enrolled in the Child-care Partnership program. During these visits, staff complete family needs assessments three times a year to discover family strengths and areas for opportunity. In addition, staff work with parents to establish formal goals driven by family needs and dreams. By developing and reaching goals, families leave our program with more knowledge and skills than when they entered it. We know that what they learn here through our parenting education, advocacy, and parent leadership opportunities, families will use these skills beyond our program.



 Foothill Family

123 families developed a goal with their Home Visitor or Family Service Specialist.

We will work to further increase the participation of families to develop formal goals to meet greater family outcomes.



Based on the yearly Client Satisfaction Survey

99%

IMPROVED LIFE OUTCOMES

100%

GOOD TO EXCELLENT OUTCOMES

100%

WOULD RECOMMEND OUR SERVICES TO OTHERS

93 Completed surveys for the program year

FISCAL DATA

The total amount of public and private funds received for Early Head Start - Home-Based & Child-care Partnerships, Grant 09CH010754:

Total HHS funding received through 6/30/2023: \$11,752,424

Total Non-federal share funding/in-kind support*: \$349,725 required
 \$675,091 actual by year-end

(Original amount was \$2,054,188 of which \$1,966,710 was waived by the Office of Head Start)

*Foothill Family Service's Grant 09CH010754 received \$436,139 in in-kind contributions in parent volunteer time, student internships, and Board and Parent Council time. Due to a lack of community resources, a Non-Federal Share Waiver was approved by OHS for \$1,966,710.)

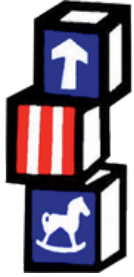
Budget Category	Actual FY 2022-2023				Contract Budget FY 2022-2023			
	Program Operations	Training Technical Assistance	Non-Federal Share	Total	Program Operations	Training Technical Assistance	Non-Federal Share	Total
Personnel	3,170,348	95,574	490,116	3,756,037	3,645,231			3,645,231
Fringe Benefits	868,675	26,187	184,975	1,079,837	987,847			987,847
Travel	11,615	299		11,914	25,400	19,169		44,569
Equipment	1,962,822			1,962,822	2,965,355			2,965,355
Supplies	234,398	5,837		240,235	242,300	4,556		246,856
Contractual	1,894,325	265,688		2,160,013	2,024,430	156,998		2,181,428
Facilities/Construction								
Other	910,709			910,709	716,173		349,725	1,065,898
Total Direct Charges	9,052,892	393,585	675,091	10,121,568	10,606,736	180,723	349,725	11,137,184
Indirect Charges	636,600			636,600	615,240			615,240
Total	9,689,492	393,585	675,091	10,758,168	11,221,976	180,723	349,725	11,752,424

HHS Funding	11,752,424
Base	11,221,976
T&TA	180,723

Non-federal share	2,054,188
Waiver	1,966,710
Revised non-federal	349,725

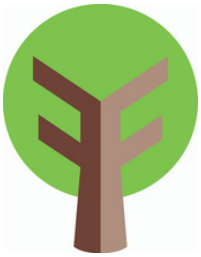
Actual NFS	675,091
In-kind	436,139
FC Match	5,646
470 Tikun Olam	233,306

RESULTS OF FEDERAL REVIEW AND AUDIT



HEAD START FEDERAL REVIEW:

The Administration for Children and Families (ACF) conducted its last Focus Area 2 (FA2) monitoring review of the Foothill Family Service Early Head Start program options in February 2021. The program received a Head Start - Focus Area Two Monitoring Review from February 22, 2021, to February 26, 2021. No findings were reported, and the Office of Head Start (OHS) acknowledged the Foothill Family's robust Mental Health Services. Foothill Family Service was not scheduled for a Federal Review during the 2022-2023 program year.



RESULTS OF THE MOST RECENT FINANCIAL AUDIT:

The most recent Foothill Family financial audit was completed at the end of November 2023 in accordance with all OMB A-1333 rules for annual audits as it applies to non-profit organizations. There were no findings or questioned costs. In addition, there were no material weaknesses or control deficiencies identified. The Foothill Family, financial audit results will be shared with the agency's Board of Directors and Policy Council (PC).